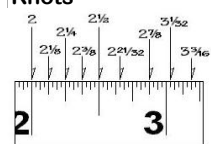


R List Timbers - 6" & thicker (All species except WRC)

Purpose Intended: Strength

Grades	Select Merchantable	No. 1 Merchantable	No. 2 Merchantable	No. 3 Common
Faces Graded	Graded on all faces and both ends - WORST CHARACTERISTIC DETERMINES THE GRADE!			
Rate of Growth	Close - 6 Rings per inch	Medium - 4 Rings per inch	no limit	no limit
Pockets	Medium (1/8" x 8")	no limit	no limit	no limit
Splits (nominal size)	1/2 width of piece	short - width of piece	2 x width of piece	1/4 length of piece
Slope of Grain	1 in 8	1 in 8	1 in 6	1 in 4
Wane (measure across corner)	1/2" in 6" x 6", 3" in 24" x 24" 1/6 length or equivalent	1/6 the face, 1/4 Length of piece, or equiv	2" in 6" x 6", 6" in 24" x 24" full length or equivalent	3" in 6" x 6", 8" in 24" x 24" full length or equivalent
Shake - measure longest shake only	1/3 thickness, 1 end only not permitted on faces	1/2 thickness, 1 end only not permitted on faces	not through 1/2 thickness, 1/2 length through - each maximum 4' long or equivalent	not through - full length through - each maximum 1/2 length
Sapstain	50% med. (Hem. = 100% Medium)	50% med. (Hem. = 100% Medium)	no limit	no limit
Heartstain	NOT PERMITTED	25% Volume	no limit	no limit
Pin Holes		10 / sq.ft. (50% more in concentrated area)	30 / sq.ft. (50% more in concentrated area)	no limit
Grub/Teredo Holes			1 per square foot	no limit
White Specks			25% volume, through	no limit
Honeycomb				streaks or areas
Unsound Wood				Spots = 1/2 size of knots ends = max 1/4Tx1/4W or equivalent
Knots				
	S&T	S&T	Any Quality (1/2 the face)	Any Quality (3/4 the face)
	6" 1 1/2"	2"	3"	4 1/2"
	8" 1 3/4"	2 1/2"	4"	6"
	10" 2 1/4"	3"	5"	7 1/2"
	12" 2 3/4"	3 1/4"	6"	9"
	14" 3 1/4"	3 3/4"	7"	10 1/2"

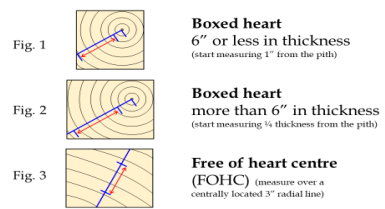


Rate of Growth

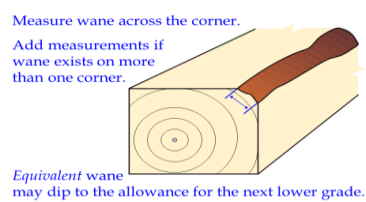
Wane

Knots

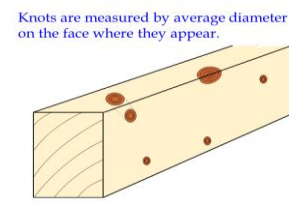
White Specks and Honeycomb



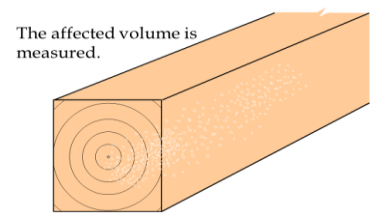
Unsound Wood



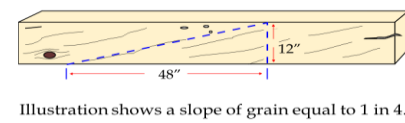
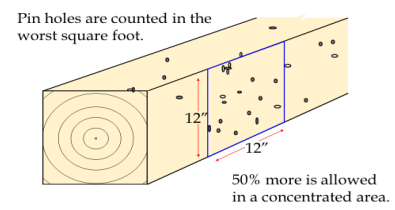
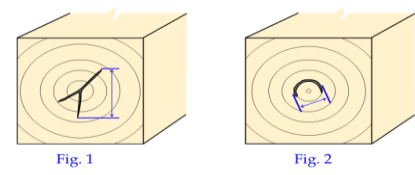
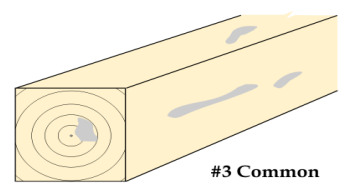
Shake



Pin Holes



Slope of Grain



R List Timbers - 6" & thicker (All species except WRC)

Coast Species